



BMW MOTORSPORT MEDIA GUIDE.

THE BMW iFE.21 AND BMW i ANDRETTI MOTORSPORT.
SEASON 7, ABB FIA FORMULA E WORLD CHAMPIONSHIP.



BMW MOTORSPORT MEDIA GUIDE.

THE BMW iFE.21 AND
BMW i ANDRETTI MOTORSPORT.

SEASON 7, ABB FIA FORMULA E
WORLD CHAMPIONSHIP.

► Introduction

Formula E:
What we learned

BMW iFE.21

BMW i drivetrain

BMW i Andretti Motorsport

Drivers

Season 7

BMW Group Safety Cars

Partners

Media contact

INTRODUCTION.



BMW i Andretti Motorsport is set to contest its third season as a works team in the ABB FIA Formula E World Championship, which has achieved official FIA World Championship status for the first time ahead of its seventh season. In its maiden season, with a win, two pole positions and several podiums, the team showed that it's able to bring home top results in Formula E. Three more wins followed in Season 6, Alexander Sims' triumph at the second race of the season in Diriyah being followed by successes for Maximilian Günther in Santiago de Chile and on home soil in Berlin. His victory in Chile made Günther the youngest race winner in the history of Formula E.

For the seventh Formula E season, which starts at the end of February, BMW i Andretti Motorsport will be competing with BMW iFE.21s. Their core is the BMW i drivetrain Racing eDrive03, which is a result of unprecedented close collaboration between production and motorsport engineers. The technology transfer between

motorsport and production development is more intensive in the Formula E project than ever before in the history of BMW.

Maximilian Günther will once again be appearing in the #28 car. Jake Dennis will take over the cockpit of the #27 car as he celebrates his Formula E debut at the first races in Diriyah. The team and both drivers have enjoyed a successful preparation period ahead of the season. During the test drives at the end of 2020 at Valencia, both BMW iFE.21s completed more than 500 laps and Günther recorded the best time of the week.

Season 7 will be the last one to feature BMW Motorsport competing with a works team in the ABB FIA Formula E World Championship. As a partner from the word go, BMW has consistently supported the Formula E project and been instrumental in the series' success story. From Season 5, BMW has enjoyed victories and podiums with the BMW i Andretti Motorsport team. BMW Group has always used Formula E

as a tech lab for production. When it comes to the development of e-drivetrains, the opportunities for this form of technology transfer in the competitive environment of Formula E have essentially been exhausted.

Furthermore, the strategic focus of BMW Group is shifting within the field of e-mobility. In the future, greater emphasis will be placed on the comprehensive scaling of the offering and global production. BMW Group plans to have put one million electric vehicles on the roads by the end of 2021. The goal is to increase this figure to seven million by 2030, of which two-thirds will be fully-electric.

As has been the case since the first Formula E race in 2014, BMW Group will once again provide the complete fleet of safety cars for Formula E as the 'Official Vehicle Partner' for Season 7.



This is an interactive brochure. Click on the tabs on the left for example to choose a specific chapter.

Introduction

► **Formula E:
What we learned**

BMW iFE.21

BMW i drivetrain

BMW i Andretti Motorsport

Drivers

Season 7

BMW Group Safety Cars

Partners

Media contact

FORMULA E: WHAT WE LEARNED.

For BMW i and BMW Motorsport, the driving force has always been the development of innovative technologies in the field of electromobility, with relevance to series production. The same experts who are developing production drives for BMW i models also worked on the drivetrain for the Formula E car, sometimes in the same production facilities. That's how the Formula E drive benefitted from the experience of production engineers during its development. A development cycle hitherto unprecedented in the BMW Group saw knowledge gained from Formula E flow directly back into the development of new BMW i series drivetrains. Motor racing makes it possible to test new materials, technologies

and working methods under extreme conditions without having to take limiting factors into consideration. In the seventh year of the partnership with Formula E and the third year racing with the BMW i Andretti Motorsport team, BMW Group has essentially exhausted the opportunities for this form of technology transfer in the competitive environment of Formula E. The learning effects are enormous for the fifth generation of E-drives, which are already on the road in the BMW iX3 (Power consumption in kWh/100: 17.8-17.5 (NEDC); 19.0-18.6 (WLTP), electric range in km: 450-458 (WLTP))* and will also be used in the BMW iX and in the BMW i4, as well as other fully-electric car models.

SOME EXAMPLES.

- The control software in the high-voltage range, which controls the e-motor after the inverter, is used in the BMW Formula E car, as well as in the current BMW i3, MINI Cooper SE, BMW iX3, and the coming models, including the BMW iX and the BMW i4.
- Knowledge gained from the highly complex energy management in Formula E can also be transferred to series vehicles when considering how much energy to apply at which point in the driving cycle, to generate maximum efficiency and range.
- Tests, competitive racing and further development of extremely effective cooling technologies and materials in Formula E contribute to a significant improvement in energy efficiency for series drivetrains.
- Power density of the e-motor, thanks to very compact design.
- Advance development of silicon carbide technology for future generations of inverter.
- Advantages of the silicon carbide technology:
 - Maximum efficiency through MOSFETS with minimal switching and conducting losses and an effective cooling system).
 - High gravimetric power density.
 - Reduced weight thanks to kevlar housing.
- Increased experience with high-powered transmissions in Formula E results in the development of a bandage for the rotor, which also enables increased revs in series.
- Optimised use of the constructed space in the vehicle thanks to new knowledge about functional integration and packaging of the drivetrain, including auxiliary units.
- Experience in the handling and operation of 800V voltage level including safety concepts.

BMW MOTORSPORT MEDIA GUIDE.

THE BMW iFE.21 AND
BMW i ANDRETTI MOTORSPORT.

SEASON 7, ABB FIA FORMULA E
WORLD CHAMPIONSHIP.

Introduction

Formula E:
What we learned

► BMW iFE.21

BMW i drivetrain

BMW i Andretti Motorsport

Drivers

Season 7

BMW Group Safety Cars

Partners

Media contact

4



BMW iFE.21.

The regulations have remained consistent when compared to Season 6 and the BMW iFE.21 boasts further detailed optimisations. It has a uniform chassis as stipulated by Formula E regulations. Some areas have enjoyed continuous improvement over the course of the past two seasons. For example, the rear structure was modified significantly thanks to innovative lightweight construction. The development of parts using generative design methods or 3D printing technology saved a considerable amount of weight compared with conventional development and production procedures, and gave the engineers more room to manoeuvre in terms of the centre of gravity of the car and weight distribution. For the first time, parts made of fibre-reinforced plastics, which were manufactured using fibres from sustainable raw materials, are being used in a race car competing on a works basis for BMW. In the BMW iFE.21, these are parts in the cooling circuit of the drivetrain, which are made of flax.

KEY SPECS OF THE GEN2 CAR.

- Length: 5,200mm
- Width: 1,800mm
- Height: 1,050mm
- Max. power: 250kW
- Race mode: 200kW
- Acceleration: 0-100 in 2.8 seconds
- Max. power regeneration: 250kW
- Minimum weight (incl. driver and battery): 903kg

Introduction

Formula E:
What we learned

BMW iFE.21

► BMW i drivetrain

BMW i Andretti Motorsport

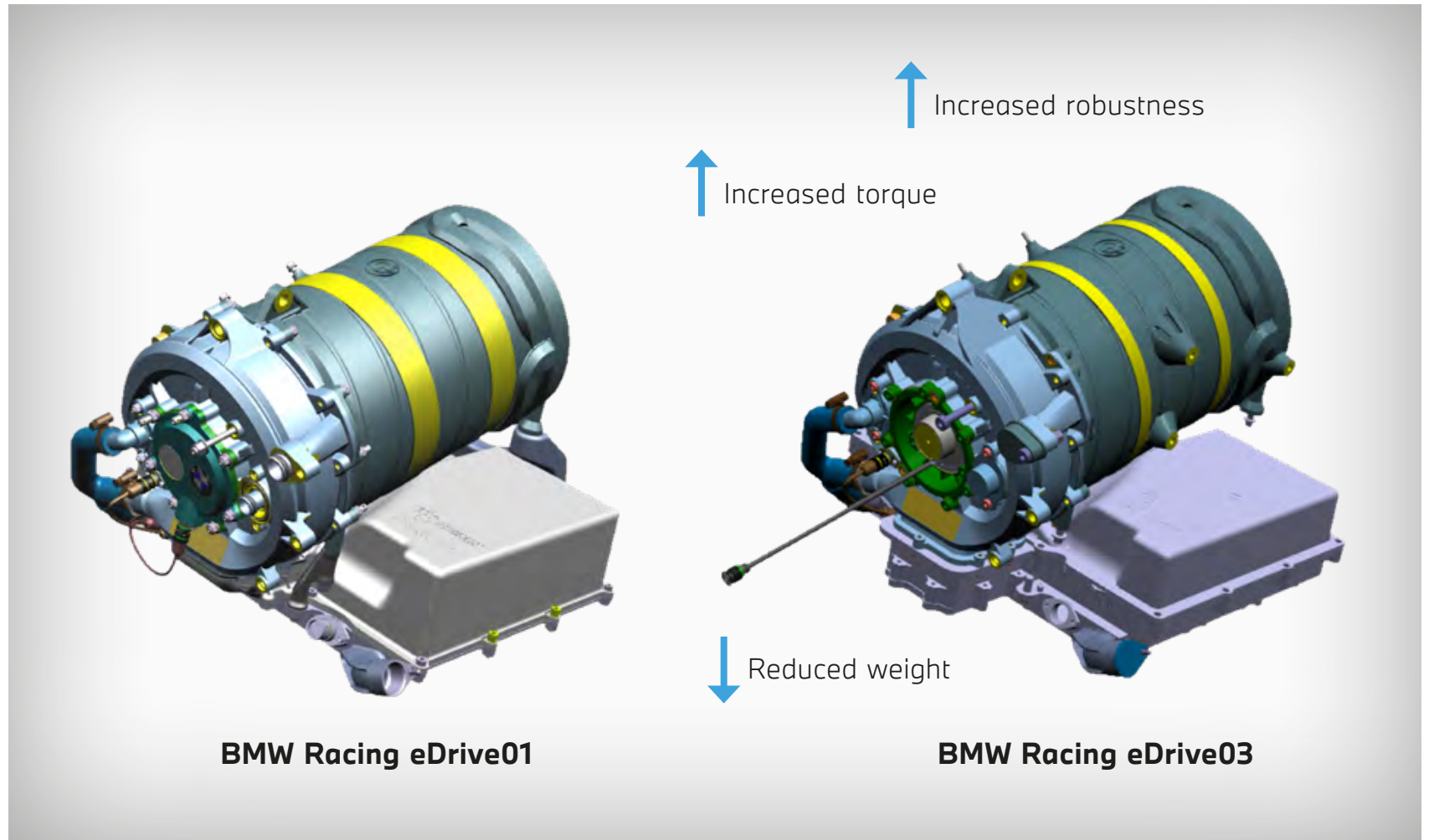
Drivers

Season 7

BMW Group Safety Cars

Partners

Media contact



BMW Racing eDrive01

BMW Racing eDrive03

BMW i DRIVETRAIN.

BMW expertise lies primarily in the core of the car, the drivetrain. The characteristic of the BMW Racing eDrive03 was revised based on the detailed information on the individual racetracks that the team gathered in the last two seasons, and modified to suit the specific challenges of Formula E races. The main goal of the modifications is to improve the efficiency of the drivetrain.

The E engine attains a maximum efficiency of 98 percent and its power density is higher than 14kW/kg. Its maximum rotational speed is more than 30,000 rpm. The inverter works with a direct current of up to 900 volts and achieves a power density of more than 45 kW/kg.

Introduction

Formula E:
What we learned

BMW iFE.21

► **BMW i drivetrain**

BMW i Andretti Motorsport

Drivers

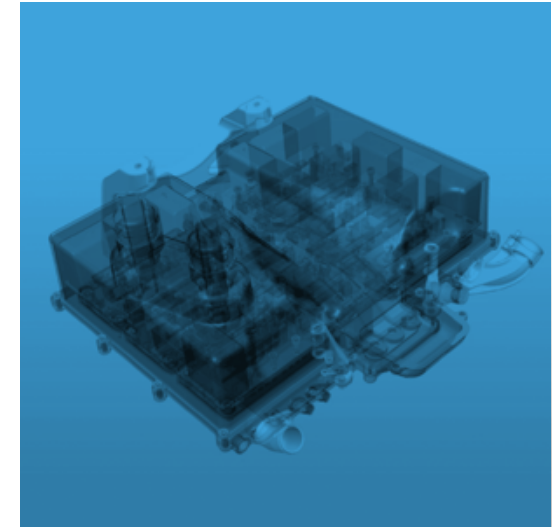
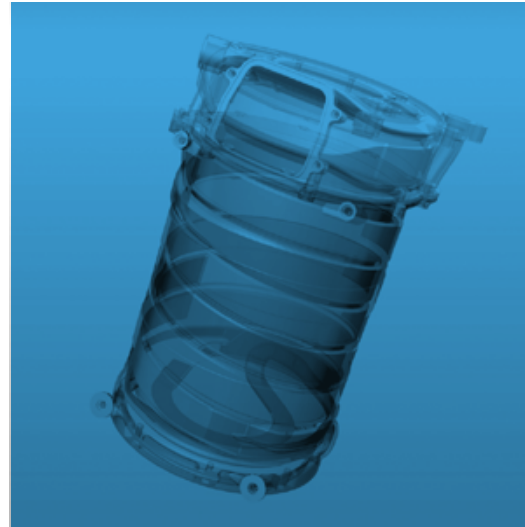
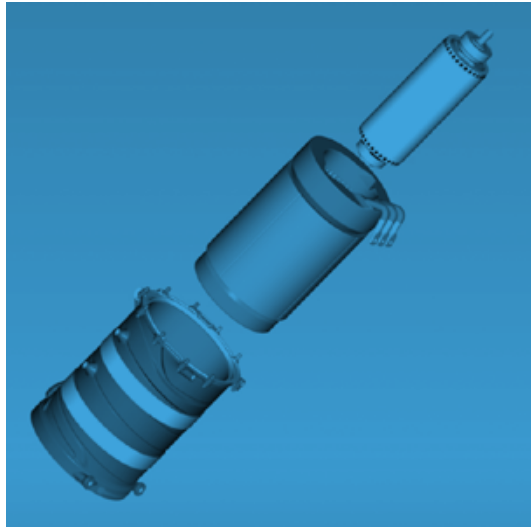
Season 7

BMW Group Safety Cars

Partners

Media contact

FACTS ON THE BMW RACING eDRIVE03.



ELECTRIC MOTOR.

- Maximum efficiency (e.g. highly effective cooling technologies and materials).
- Cutting-edge materials (carbon fibre, resins with high thermal conductivity, titanium, ceramic).
- Design for high engine speeds.
- High gravimetric energy density (kW/kg).
- Very compact construction (kW/l).

COOLING SYSTEM.

- 360° cooling allows constant operation in longer races and higher temperatures.
- Minimal pressure loss thanks to CFD optimisation.
- Use of materials with high thermal conductivity (e.g. ceramic, casting compound).
- Objective: minimisation of losses for maximum efficiency.

INVERTER.

- State-of-the-art SiC technology (MOSFETs with minimal switching and conduction losses).
- Latest materials (SiC, kevlar housing).
- High gravimetric energy density.
- Maximum efficiency (e.g. latest SiC MOSFETs, effective cooling system, low-loss circuit layout).

Introduction

Formula E:
What we learned

BMW iFE.21

► **BMW i drivetrain**

BMW i Andretti Motorsport

Drivers

Season 7

BMW Group Safety Cars

Partners

Media contact

DRIVETRAIN COMPARISON: BMW i3 vs. BMW iFE.21.

Numbers of the BMW Racing eDrive03 compared to the series production drivetrain.



Weight
-50 %



Volume
-66 %



Torque density
+100 %



Efficiency improvement
+50 %



Performance
+100 %



Energy density
+300 %



Max. revs
+100 %



BMW MOTORSPORT MEDIA GUIDE.

THE BMW iFE.21 AND
BMW i ANDRETTI MOTORSPORT.

SEASON 7, ABB FIA FORMULA E
WORLD CHAMPIONSHIP.

Introduction

Formula E:
What we learned

BMW iFE.21

BMW i drivetrain

► BMW i Andretti Motorsport

Drivers

Season 7

BMW Group Safety Cars

Partners

Media contact



BMW i ANDRETTI MOTORSPORT.

BMW i Motorsport's expertise and decades of motor racing experience within Andretti Autosport come together in the BMW i Andretti Motorsport team. Andretti has been part of the Formula E field from day one and has a successful history in motor racing, particularly in North America, including three wins in the iconic Indy 500. BMW i Andretti Motorsport contests Formula E with a US licence, but has its team HQ in Banbury, England. The team places great emphasis on continuity. Most of the members from Seasons 5 and 6 are still part of the team.



KEY PERSONNEL.



MICHAEL ANDRETTI
Team owner
Andretti Autosport



J-F THORMANN
Executive Vice President
Andretti Autosport



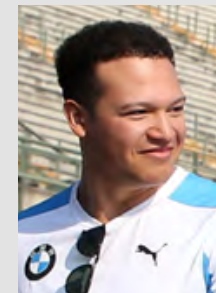
ROGER GRIFFITHS
Team Principal
BMW i Andretti Motorsport



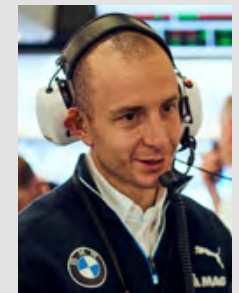
CAMPBELL HOBSON
Team Manager
BMW i Andretti Motorsport



VALENTINO CONTI
Chief Engineer
BMW i Andretti Motorsport



LOIC DESCHAMPS
Race Engineer
Jake Dennis



BRICE GAILLARDON
Race Engineer
Maximilian Günther

Introduction

Formula E:
What we learned

BMW iFE.21

BMW i drivetrain

BMW i Andretti Motorsport

► Drivers

Season 7

BMW Group Safety Cars

Partners

Media contact

#27 JAKE DENNIS.

Date of birth	16 th June 1995
Place of birth	Nuneaton (GBR)
Place of residence	Leicester (GBR)
BMW driver since	2020
Greatest successes	<ul style="list-style-type: none"> – Formula 1 test driver for Red Bull Racing – Formula Renault 2.0 NEC Champion 2012 – McLaren Autosport Award winner 2012 – World Karting Champion 2010
First race	Formula BMW at Silverstone 2011
First win	Formula BMW at Silverstone 2011
Most important race	2 nd place at Bathurst 12 Hour 2019
Hobbies	Training, sim racing
Favourite Formula E location	New York
Favourite city	London
What I like most about Formula E is...	...that we drive in such a wide variety of locations.
To be successful in Formula E,...	...drivers and teams must be very consistent. To do that, I really need to understand the package of engineers, vehicle and software that surrounds me.
This is how I envision the mobility of the future:	I think that Formula E's focus on electromobility is spot on. There is nothing I love more than the sound of a V12 engine, but in the future we will all have to try to get our CO ₂ footprint as close to zero as possible.



CAREER.

2020:	Blancpain Endurance Series
2019:	DTM, 2 nd place Bathurst 12 Hour
2018-2020	Aston Martin Red Bull Racing simulator and development driver
2018	Formula 1 test drives for Aston Martin Red Bull Racing
2016	4 th place GP3
2015	3 rd place FIA Formula 3 European Championship
2013	4 th place Eurocup Formula Renault 2.0
2012	1 st place Formula Renault 2.0 NEC, McLaren Autosport BRDC Award winner

Introduction

Formula E:
What we learned

BMW iFE.21

BMW i drivetrain

BMW i Andretti Motorsport

► Drivers

Season 7

BMW Group Safety Cars

Partners

Media contact

10

#28 MAXIMILIAN GÜNTHER.

Date of birth	2 nd July 1997
Place of birth	Oberstdorf (GER)
Place of residence	Monaco (MON)
BMW driver since	2019
Greatest successes	<ul style="list-style-type: none"> – Winner of Santiago E-Prix and Berlin E-Prix 2020 – Winner of Pau Grand Prix 2017, – Runner-up in FIA Formula 3 European Championship 2016
First race	Karting at six years of age, first single-seater race in Formula BMW in Sturup 2011
First win	Formula BMW in Monteblanco 2011
Most important races	First Formula E win in Santiago 2020 and win at Pau Grand Prix 2017
Hobbies	Cycling, triathlon, golf, cross-country skiing
Favourite Formula E location	Rome
Favourite city	New York
What I like most about Formula E is...	...that the cars are so futuristic, the competition between drivers and teams is really top-class and that the entire championship has such a progressive attitude.
To be successful in Formula E,...	...you really have to be a complete driver. You have to adjust quickly to new conditions, deal well with street circuits, stay smart inside and outside the cockpit and continually work on further development of the whole package with the team.



This is how I envision the mobility of the future:

I feel that electromobility has a great future. I think that we will see green technology in use for all means of transport. We will have to wait and see whether this will be a battery or a hydrogen fuel cell, but e-mobility will be the future.

CAREER.

2020	9 th place Formula E, 2 wins
2019	17 th place Formula E
2018	14 th place FIA Formula 2, 1 win, 2 podiums
2017	1 st place Formula 3 Grand Prix de Pau 3 rd place FIA Formula 3 European Championship
2016	2 nd place FIA Formula 3 European Championship
2014	2 nd place ADAC Formula Masters
2013	2 nd place ADAC Formula Masters

BMW MOTORSPORT MEDIA GUIDE.

THE BMW iFE.21 AND
BMW i ANDRETTI MOTORSPORT.

SEASON 7, ABB FIA FORMULA E
WORLD CHAMPIONSHIP.

Introduction

Formula E:
What we learned

BMW iFE.21

BMW i drivetrain

BMW i Andretti Motorsport

Drivers

► Season 7

BMW Group Safety Cars

Partners

Media contact

11

SEASON 7 OF THE ABB FIA FORMULA E WORLD CHAMPIONSHIP.

Formula E has now achieved official FIA World Championship status, meaning that Season 7 will take place as the ABB FIA Formula E World Championship. Combined with the ongoing global pandemic, this makes it a very significant season indeed. The unpredictable situation turns the organisation of a complete season with races on several continents into an immense challenge. The Formula E management has still managed to present an attractive race calendar.

The season kicks off with a double-header in Diriyah, where BMW i Andretti Motorsport celebrated two pole positions and a win for Alexander Sims in season 6. Now it is time for the first night races in the history of Formula E. The permanent racetrack near Valencia, where Günther recently recorded two consecutive best times for BMW i Andretti Motorsport during pre-season test drives, has been added to the calendar.

RACE CALENDAR, SEASON 7*.

R1	R2	26 th /27 th February 2021	Diriyah, Saudi-Arabia
R3	R4	10 th /11 th April 2021	Rome, Italy
R5	R6	24 th /25 th April 2021	Valencia, Spain
R7		8 th May 2021	Monaco, Monaco
R8	R9	19 th /20 th June 2021	Puebla, Mexico
R10	R11	10 th /11 th July 2021	New York, USA
R12	R13	24 th /25 th July 2021	London, UK
R14	R15	14 th /15 th August 2021	Berlin, Germany

*Subject to changes due to the pandemic

Introduction

Formula E:
What we learned

BMW iFE.21

BMW i drivetrain

BMW i Andretti Motorsport

Drivers

► **Season 7**

BMW Group Safety Cars

Partners

Media contact

12

DIRIYAH E-PRIX, 26TH FEBRUARY 2021, ROUND 1. ABB FIA FORMULA E WORLD CHAMPIONSHIP.



#27 DEN	R1 26 TH FEB KSA	#28 GUE
12 th	Race	DNF
0	Points	0
1:10.761 mins	Fastest Race Lap	1:11.113 mins
14 th	Grid Position	9 th
-	Super Pole	-
14 th 1:09.723 mins	Qualifying	9 th 1:09.227 mins
22 nd 1:10.743 mins	Free Practice 2	10 th 1:09.455 mins
24 th 1:10.441 mins	Free Practice 1	10 th 1:09.614 mins
STANDINGS		
12 th 0 points	Drivers' Standings	22 nd 0 points
	Team Standings	10 th 0 points

TEAM STANDINGS.

Pos	Team	Points
1	Mercedes-Benz EQ Formula E Team	33
2	Rokit Venturi Racing	18
3	Jaguar Racing	15
4	Audi Sport Abt Schaeffler Formula E Team	15
10	BMW i Andretti Motorsport	0

Pos	Driver	Team	Points
1	Nyck de Vries	Mercedes-Benz EQ Formula E Team	29
2	Edoardo Mortara	Rokit Venturi Racing	56
3	Mitch Evans	Jaguar Racing	46
12	Jake Dennis	BMW i Andretti Motorsport	0
22	Maximilian Günther	BMW i Andretti Motorsport	0

Introduction

Formula E:
What we learned

BMW iFE.21

BMW i drivetrain

BMW i Andretti Motorsport

Drivers

► **Season 7**

BMW Group Safety Cars

Partners

Media contact

13

DIRIYAH E-PRIX, 27TH FEBRUARY 2021, ROUND 2. ABB FIA FORMULA E WORLD CHAMPIONSHIP.



#27 DEN	R2 27 TH FEB KSA	#28 GUE
DNF	Race	DNF
0	Points	0
1:10.684 mins	Fastest Race Lap	1:09.991 mins
17 th	Grid Position	11 th
-	Super Pole	-
17 th 1:11.194 mins	Qualifying	12 th 1:08.797 mins
12 th 1:08.027 mins	Free Practice 3	17 th 1:08.318 mins

STANDINGS		
18 th 0 points	Drivers' Standings	23 rd 0 points
	Team Standings	12 th 0 points

TEAM STANDINGS.

Pos	Team	Points
1	Jaguar Racing	40
2	Mercedes-Benz EQ Formula E Team	36
3	Envision Virgin Racing	22
4	Dragon / Penske Autosport	22
12	BMW i Andretti Motorsport	0

DRIVER STANDINGS.

Pos	Driver	Team	Points
1	Nyck de Vries	Mercedes-Benz EQ Formula E Team	32
2	Sam Bird	Jaguar Racing	25
3	Robin Frijns	Envision Virgin Racing	22
18	Jake Dennis	BMW i Andretti Motorsport	0
23	Maximilian Günther	BMW i Andretti Motorsport	0

Introduction

Formula E:
What we learned

BMW iFE.21

BMW i drivetrain

BMW i Andretti Motorsport

Drivers

► **Season 7**

BMW Group Safety Cars

Partners

Media contact

14

ROME E-PRIX, 10TH APRIL 2021, ROUND 3. ABB FIA FORMULA E WORLD CHAMPIONSHIP.



#27	R3	#28
DEN	10 TH APR ROM	GUE
DNF	Race	9 th
0	Points	2
1:45.162 mins	Fastest Race Lap	1:43.882 mins
19 th	Grid Position	11 th
-	Super Pole	6 th
20 th	Qualifying	1:39.068 mins
1:40.456 mins		6 th
DNS	Free Practice 2	1 st
9 th	Free Practice 1	1:39.517 mins
1:39.587 mins		14 th
		1:39.940 mins
STANDINGS		
24 th	Drivers' Standings	19 th
0 points		2 points
	Team Standings	12 th
		2 points

TEAM STANDINGS.

Pos	Team	Points
1	Jaguar Racing	74
2	DS Techeetah	40
3	Mercedes-Benz EQ Formula E Team	39
4	Envision Virgin Racing	34
12	BMW i Andretti Motorsport	2

DRIVER STANDINGS.

Pos	Driver	Team	Points
1	Sam Bird	Jaguar Racing	43
2	Robin Frijns	Envision Virgin Racing	34
3	Nyck de Vries	Mercedes-Benz EQ Formula E Team	32
19	Maximilian Günther	BMW i Andretti Motorsport	2
24	Jake Dennis	BMW i Andretti Motorsport	0

Introduction

Formula E:
What we learned

BMW iFE.21

BMW i drivetrain

BMW i Andretti Motorsport

Drivers

► **Season 7**

BMW Group Safety Cars

Partners

Media contact

15

ROME E-PRIX, 11TH APRIL 2021, ROUND 4. ABB FIA FORMULA E WORLD CHAMPIONSHIP.



#27 DEN	R4 11 TH APR ROM	#28 GUE
13 th	Race	5 th
0	Points	10
1:41.369 mins	Fastest Race Lap	1:42.065 mins
23 rd	Grid Position	5 th
-	Super Pole	5 th 1:54.701 mins
DNS	Qualifying	3 rd 1:58.274 mins
6 th 1:40.985 mins	Free Practice 3	2 nd 1:40.156 mins

STANDINGS		
24 th 0 points	Drivers' Standings	15 th 12 points
	Team Standings	12 th 12 points

TEAM STANDINGS.

Pos	Team	Points
1	Jaguar Racing	82
2	Mercedes-Benz EQ Formula E Team	65
3	DS Techeetah	46
4	Envision Virgin Racing	37
12	BMW i Andretti Motorsport	12

DRIVER STANDINGS.

Pos	Driver	Team	Points
1	Sam Bird	Jaguar Racing	43
2	Mitch Evans	Jaguar Racing	39
3	Robin Frijns	Envision Virgin Racing	34
15	Maximilian Günther	BMW i Andretti Motorsport	12
24	Jake Dennis	BMW i Andretti Motorsport	0

Introduction

Formula E:
What we learned

BMW iFE.21

BMW i drivetrain

BMW i Andretti Motorsport

Drivers

► **Season 7**

BMW Group Safety Cars

Partners

Media contact

16

VALENCIA E-PRIX, 24TH APRIL 2021, ROUND 5. ABB FIA FORMULA E WORLD CHAMPIONSHIP.



TEAM STANDINGS.

Pos	Team	Points
1	Mercedes-Benz EQ Formula E Team	105
2	Jaguar Racing	82
3	Envision Virgin Racing	58
4	DS Techeetah	51
11	BMW i Andretti Motorsport	16

#27 DEN	R5 24 TH APR VAL	#28 GUE
8 th	Race	DNF
4	Points	0
1:41.904 mins	Fastest Race Lap	1:42.650 mins
13 th	Grid Position	2 nd
-	Super Pole	3 rd 1:26.943 mins
13 th 1:27.177 mins	Qualifying	2 nd 1:26.868 mins
12 th 1:27.226 mins	Free Practice 2	1 st 1:26.958 mins
9 th 1:27.809 mins	Free Practice 1	2 nd 1:27.425 mins
STANDINGS		
22 nd 4 points	Drivers' Standings	16 th 12 points
	Team Standings	11 th 16 points

DRIVER STANDINGS.

Pos	Driver	Team	Points
1	Nyck de Vries	Mercedes-Benz EQ Formula E Team	57
2	Stoffel Vandoorne	Mercedes-Benz EQ Formula E Team	48
3	Sam Bird	Jaguar Racing	43
16	Maximilian Günther	BMW i Andretti Motorsport	12
22	Jake Dennis	BMW i Andretti Motorsport	4

Introduction

Formula E:
What we learned

BMW iFE.21

BMW i drivetrain

BMW i Andretti Motorsport

Drivers

► Season 7

BMW Group Safety Cars

Partners

Media contact

VALENCIA E-PRIX, 25TH APRIL 2021, ROUND 6. ABB FIA FORMULA E WORLD CHAMPIONSHIP.



TEAM STANDINGS.

Pos	Team	Points
1	Mercedes-Benz EQ Formula E Team	105
2	Jaguar Racing	82
3	Envision Virgin Racing	58
4	DS Techeetah	57
7	BMW i Andretti Motorsport	45

#27 DEN	R6 25 TH APR VAL	#28 GUE
1 st	Race	12 th
29	Points	0
1:30.658 mins	Fastest Race Lap	1:30.500 mins
1 st	Grid Position	24 th
1:28.584 mins	Super Pole	-
1:31.855 mins	Qualifying	24 th 1:41.980 mins
9 th 1:36.092 mins	Free Practice 3	14 th 1:36.474 mins

STANDINGS		
8 th 33 points	Drivers' Standings	21 st 12 points
	Team Standings	7 th 45 points

DRIVER STANDINGS.

Pos	Driver	Team	Points
1	Nyck de Vries	Mercedes-Benz EQ Formula E Team	57
2	Stoffel Vandoorne	Mercedes-Benz EQ Formula E Team	48
3	Sam Bird	Jaguar Racing	43
8	Jake Dennis	BMW i Andretti Motorsport	33
21	Maximilian Günther	BMW i Andretti Motorsport	12



Introduction

Formula E:
What we learned

BMW iFE.21

BMW i drivetrain

BMW i Andretti Motorsport

Drivers

► **Season 7**

BMW Group Safety Cars

Partners

Media contact

18

MONACO E-PRIX, 8TH MAY 2021, ROUND 7. ABB FIA FORMULA E WORLD CHAMPIONSHIP.



TEAM STANDINGS.

Pos	Team	Points
1	Mercedes-Benz EQ Formula E Team	105
2	Jaguar Racing	103
3	DS Techeetah	98
4	Envision Virgin Racing	81
5	BMW i Andretti Motorsport	55

#27 DEN	R7 8 TH MAY MON	#28 GUE
16 th	Race	5 th
0	Points	10
1:35.151 mins	Fastest Race Lap	1:35.371 mins
14 th	Grid Position	5 th
-	Super Pole	5 th 1:32.039 mins
14 th 1:32.247 mins	Qualifying	3 rd 1:31.817 mins
17 th 1:32.403 mins	Free Practice 2	14 th 1:32.105 mins
23 rd 1:34.170 mins	Free Practice 1	17 th 1:33.281 mins
STANDINGS		
10 th 33 points	Drivers' Standings	16 th 22 points
	Team Standings	5 th 55 points

DRIVER STANDINGS.

Pos	Driver	Team	Points
1	Robin Frijns	Envision Virgin Racing	62
2	Nyck de Vries	Mercedes-Benz EQ Formula E Team	57
3	Mitch Evans	Jaguar Racing	54
10	Jake Dennis	BMW i Andretti Motorsport	33
16	Maximilian Günther	BMW i Andretti Motorsport	22

Introduction

Formula E:
What we learned

BMW iFE.21

BMW i drivetrain

BMW i Andretti Motorsport

Drivers

► **Season 7**

BMW Group Safety Cars

Partners

Media contact

19

PUEBLA E-PRIX, 19TH JUNE 2021, ROUND 8. ABB FIA FORMULA E WORLD CHAMPIONSHIP.



#27 DEN	R8 19 TH JUN PUE	#28 GUE
5 th	Race	12 th
10	Points	0
1:26.338 mins	Fastest Race Lap	1:26.871 mins
3 rd	Grid Position	5 th
3 rd 1:23.879 mins	Super Pole	5 th 1:25.095 mins
3 rd 1:23.886 mins	Qualifying	5 th 1:24.072 mins
7 th 1:23.544 mins	Free Practice 2	18 th 1:24.591 mins
5 th 1:24.920 mins	Free Practice 1	18 th 1:26.520 mins
STANDINGS		
10 th 43 points	Drivers' Standings	17 th 22 points
	Team Standings	6 th 65 points

TEAM STANDINGS.

Pos	Team	Points
1	Mercedes-Benz EQ Formula E Team	113
2	Jaguar Racing	107
3	DS Techeetah	106
4	Audi Sport ABT Schaeffler	97
6	BMW i Andretti Motorsport	65

DRIVER STANDINGS.

Pos	Driver	Team	Points
1	Robin Frijns	Envision Virgin Racing	62
2	António Félix da Costa	DS Techeetah	60
3	Nyck de Vries	Mercedes-Benz EQ Formula E Team	59
10	Jake Dennis	BMW i Andretti Motorsport	43
17	Maximilian Günther	BMW i Andretti Motorsport	22

Introduction

Formula E:
What we learned

BMW iFE.21

BMW i drivetrain

BMW i Andretti Motorsport

Drivers

► **Season 7**

BMW Group Safety Cars

Partners

Media contact

20

PUEBLA E-PRIX, 20TH JUNE 2021, ROUND 9. ABB FIA FORMULA E WORLD CHAMPIONSHIP.



#27 DEN	R9 20 TH JUN PUE	#28 GUE
5 th	Race	7 th
11	Points	6
1:25.688 mins	Fastest Race Lap	1:25.608 mins
5 th	Grid Position	11 th
5 th 1:24.154 mins	Super Pole	-
1 st 1:22.816 mins	Qualifying	11 th 1:23.640 mins
24 th 1:24.501 mins	Free Practice 3	8 th 1:22.174 mins
8 th 54 points	STANDINGS	18 th 28 points
	Drivers' Standings	7 th 82 points
	Team Standings	

TEAM STANDINGS.

Pos	Team	Points
1	Mercedes-Benz EQ Formula E Team	113
2	DS Techeetah	110
3	Jaguar Racing	109
4	Audi Sport ABT Schaeffler	99
7	BMW i Andretti Motorsport	82

DRIVER STANDINGS.

Pos	Driver	Team	Points
1	Edoardo Mortara	ROKIT Venturi Racing	72
2	Robin Frijns	Envision Virgin Racing	62
3	António Félix da Costa	DS Techeetah	60
8	Jake Dennis	BMW i Andretti Motorsport	54
18	Maximilian Günther	BMW i Andretti Motorsport	28

Introduction

Formula E:
What we learned

BMW iFE.21

BMW i drivetrain

BMW i Andretti Motorsport

Drivers

► **Season 7**

BMW Group Safety Cars

Partners

Media contact

21

NEW YORK CITY, 10TH JULY 2021, ROUND 10. ABB FIA FORMULA E WORLD CHAMPIONSHIP.



TEAM STANDINGS.

Pos	Team	Points
1	DS Techeetah	128
2	Envision Virgin Racing	124
3	Audi Sport ABT Schaeffler	115
4	Mercedes-Benz EQ Formula E Team	113
6	BMW i Andretti Motorsport	107

#27 DEN	R10 10 TH JUL NYC	#28 GUE
DNF	Race	1 st
0	Points	25
1:11.031 mins	Fastest Race Lap	1:11.425 mins
15 th	Grid Position	4 th
	Super Pole	4 th
15 th 1:10.239 mins	Qualifying	1:09.640 mins
11 th 1:09.844 mins	Free Practice 2	5 th 1:09.718 mins
22 nd 1:12.039 mins	Free Practice 1	2 nd 1:09.417 mins
	Free Practice 1	3 rd 1:10.701 mins
	STANDINGS	
11 th 54 points	Drivers' Standings	12 th 53 points
	Team Standings	6 th 107 points

DRIVER STANDINGS.

Pos	Driver	Team	Points
1	Edoardo Mortara	ROKIT Venturi Racing	72
2	Robin Frijns	Envision Virgin Racing	72
3	Jean-Éric Vergne	DS Techeetah	68
11	Jake Dennis	BMW i Andretti Motorsport	54
12	Maximilian Günther	BMW i Andretti Motorsport	53

Introduction

Formula E:
What we learned

BMW iFE.21

BMW i drivetrain

BMW i Andretti Motorsport

Drivers

► **Season 7**

BMW Group Safety Cars

Partners

Media contact

NEW YORK CITY, 11TH JULY 2021, ROUND 11. ABB FIA FORMULA E WORLD CHAMPIONSHIP.



#27 DEN	R11 11 TH JUL NYC	#28 GUE
16 th	Race	10 th
0	Points	1
1:11.077 mins	Fastest Race Lap	1:10.411 mins
19 th	Grid Position	23 rd
-	Super Pole	-
19 th 1:09.969 mins	Qualifying	23 rd 1:10.637 mins
17 th 1:08.993 mins	Free Practice 3	13 th 1:08.917 mins
15 th 54 points	STANDINGS	14 th 54 points
	Drivers' Standings	6 th 108 points
	Team Standings	

TEAM STANDINGS.

Pos	Team	Points
1	Envision Virgin Racing	146
2	DS Techeetah	144
3	Jaguar Racing	141
4	Audi Sport ABT Schaeffler	115
6	BMW i Andretti Motorsport	108

DRIVER STANDINGS.

Pos	Driver	Team	Points
1	Sam Bird	Jaguar Racing	81
2	António Félix da Costa	DS Techeetah	76
3	Robin Frijns	Envision Virgin Racing	76
14	Maximilian Günther	BMW i Andretti Motorsport	54
15	Jake Dennis	BMW i Andretti Motorsport	54

Introduction

Formula E:
What we learned

BMW iFE.21

BMW i drivetrain

BMW i Andretti Motorsport

Drivers

► **Season 7**

BMW Group Safety Cars

Partners

Media contact

LONDON, 24TH JULY 2021, ROUND 12. ABB FIA FORMULA E WORLD CHAMPIONSHIP.



TEAM STANDINGS.

Pos	Team	Points
1	DS Techeetah	148
2	Envision Virgin Racing	146
3	Jaguar Racing	141
4	Mercedes-Benz EQ Formula E Team	137
6	BMW i Andretti Motorsport	133

#27 DEN	R12 24 TH JUL LDN	#28 GUE
1 st	Race	18 th
25	Points	0
1:22.778 mins	Fastest Race Lap	1:22.858 mins
2 nd	Grid Position	24 th
1:23.544 mins	Super Pole	-
1:24.032 mins	Qualifying	-
2 nd 1:27.312 mins	Free Practice 2	1 st 1:26.838 mins
12 th 1:22.054 mins	Free Practice 1	18 th 1:22.429 mins
STANDINGS		
3 rd 79 points	Drivers' Standings	15 th 54 points
	Team Standings	6 th 133 points

DRIVER STANDINGS.

Pos	Driver	Team	Points
1	Sam Bird	Jaguar Racing	81
2	António Félix da Costa	DS Techeetah	80
3	Jake Dennis	BMW i Andretti Motorsport	79
4	Nyck de Vries	Mercedes-Benz EQ Formula E Team	77
15	Maximilian Günther	BMW i Andretti Motorsport	54

Introduction

Formula E:
What we learned

BMW iFE.21

BMW i drivetrain

BMW i Andretti Motorsport

Drivers

► **Season 7**

BMW Group Safety Cars

Partners

Media contact

LONDON, 25TH JULY 2021, ROUND 13. ABB FIA FORMULA E WORLD CHAMPIONSHIP.



TEAM STANDINGS.

Pos	Team	Points
1	Envision Virgin Racing	165
2	Mercedes-Benz EQ Formula E Team	158
3	Jaguar Racing	156
4	DS Techeetah	148
5	BMW i Andretti Motorsport	143

#27 DEN	R13 25 TH JUL LDN	#28 GUE
9 th	Race	6 th
2	Points	8
1:22.031 mins	Fastest Race Lap	1:22.470 mins
17 th	Grid Position	6 th
-	Super Pole	6 th 1:20.398 mins
17 th 1:21.042 mins	Qualifying	5 th 1:20.504 mins
2 nd 1:20.233 mins	Free Practice 3	9 th 1:20.633 mins
4 th 81 points	STANDINGS	15 th 62 points
	Drivers' Standings	5 th 143 points
	Team Standings	

DRIVER STANDINGS.

Pos	Driver	Team	Points
1	Nyck de Vries	Mercedes-Benz EQ Formula E Team	95
2	Robin Frijns	Envision Virgin Racing	89
3	Sam Bird	Jaguar Racing	81
4	Jake Dennis	BMW i Andretti Motorsport	81
15	Maximilian Günther	BMW i Andretti Motorsport	62

Introduction

Formula E:
What we learned

BMW iFE.21

BMW i drivetrain

BMW i Andretti Motorsport

Drivers

► **Season 7**

BMW Group Safety Cars

Partners

Media contact

BERLIN, 14TH AUGUST 2021, ROUND 14. ABB FIA FORMULA E WORLD CHAMPIONSHIP.



TEAM STANDINGS.

Pos	Team	Points
1	Jaguar Racing	171
2	DS Techeetah	166
3	Envision Virgin Racing	165
4	Audi Sport ABT Schaeffler	162
6	BMW i Andretti Motorsport	157

#27 DEN	R14 14 TH AUG BER	#28 GUE
5 th	Race	8 th
10	Points	4
1:09.188 mins	Fastest Race Lap	1:09.307 mins
8 th	Grid Position	10 th
-	Super Pole	-
8 th 1:06.592 mins	Qualifying	10 th 1:06.627 mins
1 st 1:06.228 mins	Free Practice 2	6 th 1:06.646 mins
1 st 1:06.949 mins	Free Practice 1	3 rd 1:06.965 mins
STANDINGS		
3 rd 91 points	Drivers' Standings	14 th 66 points
	Team Standings	6 th 157 points

DRIVER STANDINGS.

Pos	Driver	Team	Points
1	Nyck de Vries	Mercedes-Benz EQ Formula E Team	95
2	Edoardo Mortara	ROKIT Venturi Racing	92
3	Jake Dennis	BMW i Andretti Motorsport	91
4	Mitch Evans	Jaguar Racing	90
14	Maximilian Günther	BMW i Andretti Motorsport	66

Introduction

Formula E:
What we learned

BMW iFE.21

BMW i drivetrain

BMW i Andretti Motorsport

Drivers

► **Season 7**

BMW Group Safety Cars

Partners

Media contact

BERLIN, 15TH AUGUST 2021, ROUND 15. ABB FIA FORMULA E WORLD CHAMPIONSHIP.



TEAM STANDINGS.

Pos	Team	Points
1	Mercedes-Benz EQ Formula E Team	181
2	Jaguar Racing	177
3	DS Techeetah	166
4	Audi Sport ABT Schaeffler	165
6	BMW i Andretti Motorsport	157

#27 DEN	R15 15 TH AUG BER	#28 GUE
DNF	Race	15 th
0	Points	0
-	Fastest Race Lap	1:09.175 mins
9 th	Grid Position	18 th
-	Super Pole	-
9 th 1:07.106 mins	Qualifying	18 th 1:07.227 mins
7 th 1:06.784 mins	Free Practice 2	2 nd 1:06.415 mins
5 th 1:06.938 mins	Free Practice 1	14 th 1:07.254 mins
STANDINGS		
3 rd 91 points	Drivers' Standings	16 th 66 points
	Team Standings	6 th 157 points

DRIVER STANDINGS.

Pos	Driver	Team	Points
1	Nyck de Vries	Mercedes-Benz EQ Formula E Team	99
2	Edoardo Mortara	ROKIT Venturi Racing	92
3	Jake Dennis	BMW i Andretti Motorsport	91
4	Mitch Evans	Jaguar Racing	90
16	Maximilian Günther	BMW i Andretti Motorsport	66

BMW MOTORSPORT MEDIA GUIDE.

THE BMW iFE.21 AND
BMW i ANDRETTI MOTORSPORT.

SEASON 7, ABB FIA FORMULA E
WORLD CHAMPIONSHIP.

Introduction

Formula E:
What we learned

BMW iFE.21

BMW i drivetrain

BMW i Andretti Motorsport

Drivers

Season 7

► **BMW Group Safety Cars**

Partners

Media contact



BMW GROUP SAFETY CAR FLEET.

The BMW Group has been represented in the ABB FIA Formula E World Championship as Official Vehicle Partner since the very beginning and will continue to provide the fleet of safety cars for season 7 of the fully-electric racing series.

Alongside the BMW i8 Roadster Safety Car (fuel consumption (combined): 2.0 l/100 km; energy use (combined): 14.5 kWh /100 km; combined CO₂ emissions: 46 g/km)*, which has been modified specially for racing use, the MINI Electric Pacesetter inspired by

JCW will be appearing as a new safety car from the Rome E-Prix onwards. The development of the car based on the new MINI Cooper SE represents a hitherto unique collaboration between MINI Design, BMW Motorsport, the FIA and Formula E. The fleet also includes the BMW i3s (Power consumption in kWh/100: 14.6-14.0 (NEDC); 16.6-16.3 (WLTP), electric range in km: 278-283 (WLTP))* as 'Race Director Car' and the BMW iX3 (Power consumption in kWh/100: 17.8-17.5 (NEDC); 19.0-18.6 (WLTP), electric range in km: 450-458 (WLTP))* in its roles as 'Medical Car' and 'Rescue Car'.

*Official data on power consumption and electric range were determined in accordance with the mandatory measurement procedure and comply with Regulation (EU) 715/2007 valid at the time of type approval. In case of a range, figures in the NEDC take into account differences in the selected wheel and tire size; figures in the WLTP take into account any optional equipment. WLTP values are used for assessing taxes and other vehicle-related charges that are (also) based on CO₂ emissions, as well as for the purposes of vehicle-specific subsidies, if applicable. Where applicable, the NEDC values listed were calculated based on the new WLTP measurement procedure and then converted back to the NEDC measurement procedure for comparability reasons. For more information on the WLTP and NEDC measurement procedures, see www.bmw.de/wltp. For further information about the official fuel consumption and the specific CO₂ emission of new passenger cars can be taken out of the 'handbook of fuel consumption, the CO₂ emission and power consumption of new passenger cars', which is available at all selling points and at <https://www.dat.de/angebote/verlagsprodukte/leitfadenkraftstoffverbrauch.html>.

27

BMW MOTORSPORT MEDIA GUIDE.

THE BMW iFE.21 AND
BMW i ANDRETTI MOTORSPORT.

SEASON 7, ABB FIA FORMULA E
WORLD CHAMPIONSHIP.

Introduction

Formula E:
What we learned

BMW iFE.21

BMW i drivetrain

BMW i Andretti Motorsport

Drivers

Season 7

► **BMW Group Safety Cars**

Partners

Media contact

28



MINI ELECTRIC PACESETTER INSPIRED BY JCW.

The MINI Electric Pacesetter inspired by JCW is the new Safety Car for the ABB FIA Formula E World Championship race series. As such, it connects the brand's electrified future with the rich racing history of John Cooper Works. The car was created out of the new MINI Cooper SE as part of an unprecedented collaboration between MINI Design, BMW Motorsport, the FIA and the Formula E.

Behind the visually powerful design of the MINI Electric Pacesetter inspired by JCW lies the expertise of BMW Motorsport. Rigorous adherence to lightweight design principles gives the Safety Car a kerb weight of approx. 1,230 kg – which makes it approx. 130 kg lighter than the standard MINI Cooper SE. The drive system – also based on that found in the MINI Cooper SE – produces 135 kW and 280 Nm (206 lb-ft), which enables the MINI Electric Pacesetter inspired by JCW to sprint from 0-100 km/h (62 mph) in 6.7 seconds (standard

model: 7.3 s) and from 0-60 km/h (37 mph) in 3.6 seconds (standard model: 3.9 s). Even more important for a Safety Car, though, are the mid-range figures. Here, the MINI Electric Pacesetter inspired by JCW showcases all the talents of its torque-rich electric drive system with single-speed transmission, enabling a 80-120 km/h (75 mph) time of 4.3 seconds (standard model: 4.6 s).

The drive system teams up with racing coilover suspension (three-way adjustable for rebound, compression, height and camber) to deliver maximum go-kart feeling. Race-spec suspension control arm mountings, a 10 mm increase in track width, plus the four-piston brakes and wheels from the MINI John Cooper Works GP with Michelin Pilot Sport tyres (size 245/40 R18) round off the overall package. These are the same tyres fitted to the front wheels of Formula E racing cars.

Introduction

Formula E:
What we learned

BMW iFE.21

BMW i drivetrain

BMW i Andretti Motorsport

Drivers

Season 7

BMW Group Safety Cars

► **Partners**

Media contact

THE PARTNERS.

PRIMARY PARTNER.



The Formula E Championship is the only race series that puts forward-looking technologies on the road - and in cities around the world that face complex mobility challenges. It serves as a competitive platform for evaluating and developing technologies and solutions for future vehicles, said Swamy Kotagiri, CEO Magna.

As a mobility technology company, Magna is focused on delivering what's needed today while creating technologies society doesn't even know they need yet. With over 157,000 entrepreneurial minded employees and more than 60 years of experience, we are helping bring freedom to mobility. The freedom to go greener, safer, faster and without constraints.

For further information about Magna, visit www.magna.com.

MAIN PARTNER.



Julius Baer is the leading Swiss wealth management group and a premium brand in this global sector, with a focus on servicing and advising sophisticated private clients. Our client-centric approach, our objective advice based on the Julius Baer open product platform, our solid financial base and our entrepreneurial management culture make us the international reference in wealth management.

We support projects and activities that have a visionary approach and share our values with regards to innovation, sustainability and forward-looking pioneering spirit.

Therefore, we are proud to be the founding Global Partner of the world's first fully electric racing series, the ABB FIA Formula E World Championship and to support the BMW i Andretti Motorsport Team as their Main Partner. The innovative approach of Formula E and BMW i resonate deeply with our corporate values, which is why it is an ideal sponsorship platform for the Bank.

Identifying and exploring the global megatrends set to affect our lives in years to come is a vital part of staying ahead of the curve and is the basis for our Next Generation investment philosophy. We firmly believe that how we invest today determines how we live tomorrow.

For current partnerships and initiatives as well as for more information visit our website. www.juliusbaer.com/en/about-us/our-company/sponsoring

BMW MOTORSPORT MEDIA GUIDE.

THE BMW iFE.21 AND
BMW i ANDRETTI MOTORSPORT.

SEASON 7, ABB FIA FORMULA E
WORLD CHAMPIONSHIP.

Introduction

Formula E:
What we learned

BMW iFE.21

BMW i drivetrain

BMW i Andretti Motorsport

Drivers

Season 7

BMW Group Safety Cars

► **Partners**

Media contact

30

THE PARTNERS.

MAIN PARTNER.



Einhell is the leading manufacturer of cutting-edge tools for home and garden. By constantly developing our innovative battery platform, Power X-Change, we are already an internationally successful company and a pioneer in the field of battery-powered tools and garden equipment. More than 200 tools and garden tools can now be operated with just one type of battery. For years, our products have set standards in terms of endurance, performance and safety. Our customers also appreciate the cordless freedom for all do-it-yourself projects, the attractive price-performance ratio and the first-class customer service.

We are Main Partner of BMW i Motorsport in Formula E, ensuring we have our finger on the pulse when it comes to future technologies, which we can incorporate in our tools. Furthermore, we supply the BMW i Andretti Motorsport Team with our Power X-Change battery tools, offering its mechanics wireless freedom in the garage.

OFFICIAL PARTNER.



Fortinet secures the largest enterprise, service provider, and government organisations around the world. Fortinet empowers our customers with complete visibility and control across the expanding attack surface and the power to take on ever-increasing performance requirements today and into the future. Only the Fortinet Security Fabric platform can address the most critical security challenges and protect data across the entire digital infrastructure, whether in networked, application, multi-cloud or edge environments. Fortinet ranks #1 in the most security appliances shipped worldwide and more than 440,000 customers trust Fortinet to protect their businesses.

OFFICIAL SUPPLIER.



PUMA is one of the world's leading sports brands, designing, developing, selling and marketing footwear, apparel and accessories. For more than 70 years, PUMA has relentlessly pushed sport and culture forward by creating fast products for the world's fastest athletes. PUMA offers performance and sport-inspired lifestyle products in categories such as football, running and training, basketball, golf, and motorsports. It collaborates with renowned designers and brands to bring sport influences into street culture and fashion. The PUMA Group owns the brands PUMA, Cobra Golf and stichd. The company distributes its products in more than 120 countries, employs about 14,000 people worldwide, and is headquartered in Herzogenaurach/Germany.

BMW MOTORSPORT MEDIA GUIDE.

THE BMW iFE.21 AND
BMW i ANDRETTI MOTORSPORT.

SEASON 7, ABB FIA FORMULA E
WORLD CHAMPIONSHIP.

Introduction

Formula E:
What we learned

BMW iFE.21

BMW i drivetrain

BMW i Andretti Motorsport

Drivers

Season 7

BMW Group Safety Cars

Partners

► **Media contact**

31

MEDIA CONTACT.



Benedikt Torka

Spokesperson BMW Motorsport

Phone: +49 (0)151 601 32455

E-mail: benedikt.torka@bmwgroup.com

Matthias Schepke

Spokesperson BMW Motorsport

Phone: +49 (0)151 – 601 90 450

E-mail: matthias.schepke@bmw.de

Benjamin Titz

Head of BMW Group Design,

Innovations & Motorsports Communications

Phone: +49 (0)179 – 743 80 88

E-mail: benjamin.titz@bmw.de

Media Website.

www.press.bmwgroup.com

BMW Motorsport on the web.

